

Urban Commons

# Homelessness

&

# Architecture

Meanjin  
Community  
Centre

**JOEL CLISH**

N8872635

**PROJECT 2**

Design Project

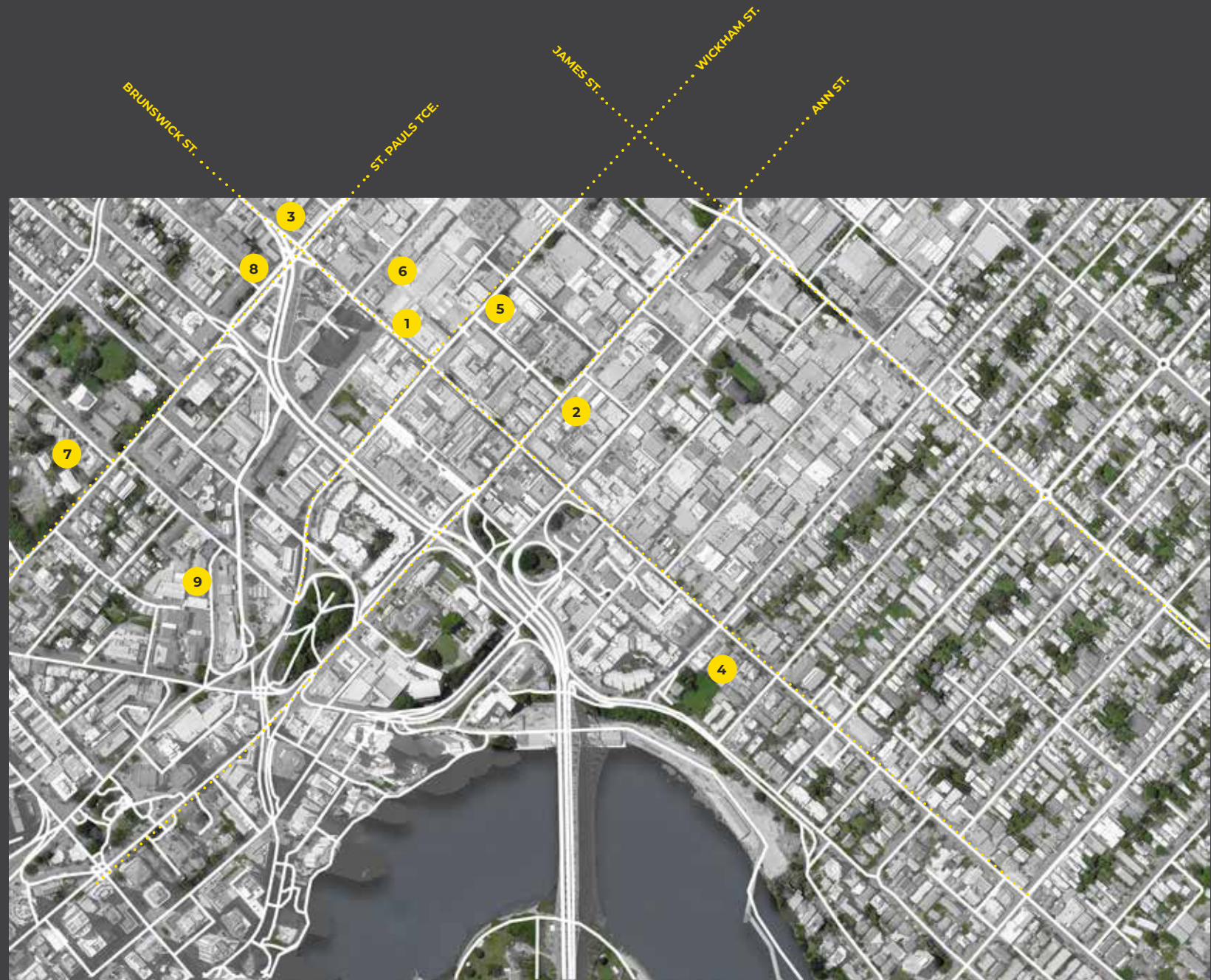
Prepared for

**Yasu Santo + Waldemar Jenek**

DAN201 - Master Studio B

# CONTEXT

- 1 Fortitude Valley Train Station
- 2 Brisbane Youth Services
- 3 Wesley Mission QLD
- 4 3rd Space Brisbane
- 5 Oxfam Australia
- 6 Breakthru Employment
- 7 Pindari Homeless Mens Service
- 8 Brisbane Relief Hub
- 9 Brisbane StreetLevel Mission





# PROPOSED SITE



- Proposed Site Location
- Valley Metro Development
- Council + State Heritage
- Commercial Property
- Residential Property

ST. PAULS TCE.

WICKHAM ST.

BRUNSWICK ST.

ALFRED ST.

JULIA ST.

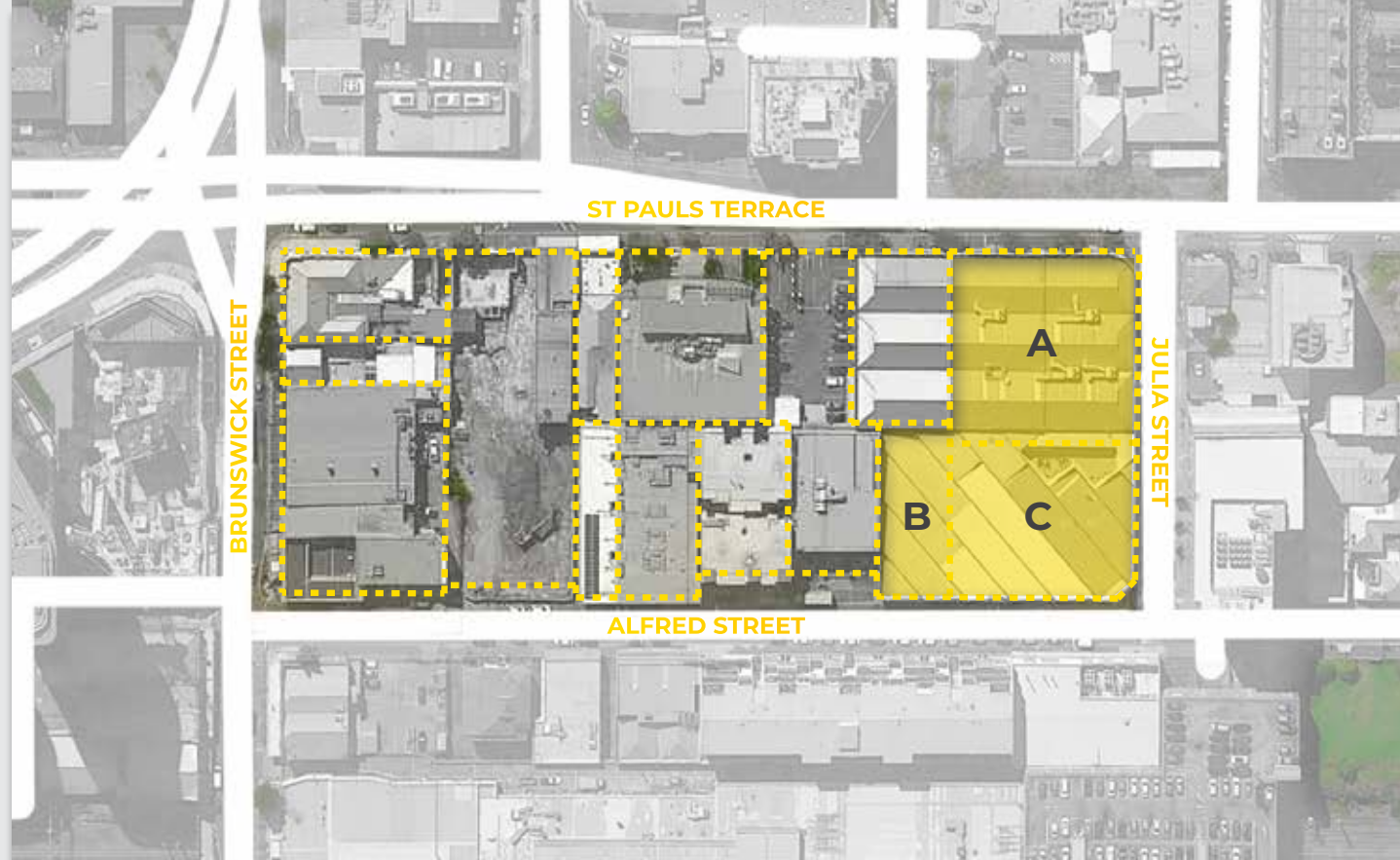
# SITE INFORMATION

## - PROPOSED SITE -

**ADDRESS:** 2/435 St Pauls Tce  
Fortitude Valley, QLD, 4006

LOT 2 on BUP11768

**SITE AREA:** 4420m<sup>2</sup>



## - SITE A -

**ADDRESS:** 2/435 St Pauls Tce  
Fortitude Valley, QLD, 4006

LOT 2 on BUP11768

**CURRENT USE:** Services Australia

**SITE AREA:** 2050m<sup>2</sup>

## - SITE B -

**ADDRESS:** 3/435 St Pauls Tce  
Fortitude Valley, QLD, 4006

LOT 0 on BUP11768

**CURRENT USE:** Residential

**SITE AREA:** 750m<sup>2</sup>

## - SITE C -

**ADDRESS:** 4/435 St Pauls Tce  
Fortitude Valley, QLD, 4006

LOT 3 on BUP11768

**CURRENT USE:** Residential

**SITE AREA:** 1650m<sup>2</sup>

# CORE VALUES

Architectural intervention provides an environment from which great things grow. The vision behind the **Meanjin Community Centre** is to provide a central and inclusive environment which looks to dissolve stigmas surrounding homelessness and provide support to those doing it tough.

The key objectives of the centre are to provide essential services, community engagement, outreach collaboration and training & integration.



ESSENTIAL SERVICES



COMMUNITY ENGAGEMENT



COLLABORATIVE PARTNERSHIPS



TRAINING & INTEGRATION

**ESSENTIAL SERVICES:** Providing essential services means providing people experiencing homelessness with basic human rights which they are unable to access due to their circumstances.

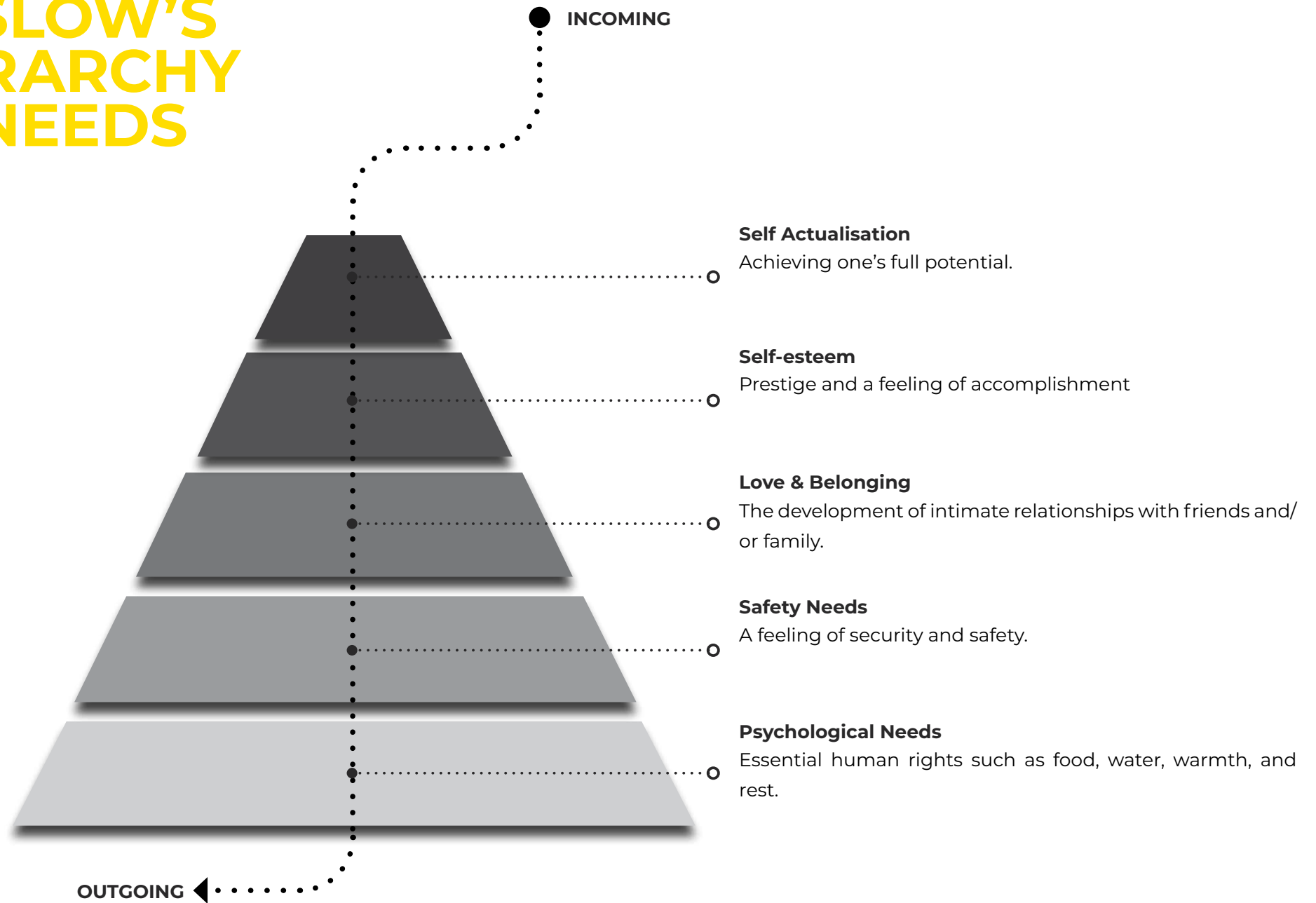
**COMMUNITY ENGAGEMENT:** Community must be at the heart of outreach. The community centre looks to integrate members of our local community into the centre, not only to provide support for those doing it tough, but also to raise awareness around homelessness in order to dissolve misconception and stigma.

**COLLABORATIVE PARTNERSHIPS:** The centre looks to collaborate with existing services and charities who already do incredible work within the community. Why re-invent the wheel when there are organisations who could benefit from an amazing facility to enhance their service?

**TRAINING & INTEGRATION:** Training and education will be available to those in need in order to assist people experiencing homelessness in integrating back into society and employment



# MASLOW'S HEIRARCHY OF NEEDS



# PROPOSED FACILITIES



FOOD  
PREPARATION  
AREA



DINING HALL



MOBILE SERVICE  
PROVIDER PARKING



MEDICAL  
FACILITIES



OFFICE &  
CONSULTANCY  
SPACE



FUNCTION  
ROOMS



TEACHING ROOMS



COUNSELING  
SPACE



COMPUTER &  
INTERNET ACCESS



INFORMAL BREAKOUT  
SPACE



GENERAL  
AMENITIES



COMMUNITY  
GARDENS

# PROPOSED SERVICES



SOUP KITCHEN



MEDICAL CARE



DENTAL CARE



MENTAL  
HEALTHCARE



LAUNDRY



HYGIENE +  
GROOMING



EMPLOYMENT  
PREPARATION



LEGAL AID



CLOTHING EXCHANGE



COUNSELING / CRISIS  
SUPPORT



LIFE SKILLS +  
EDUCATION



COMMUNITY  
GARDENING  
INITIATIVE



# PARTNERSHIPS

Causes of homelessness are complex and diverse. Homeless is the result of a shortage of affordable housing, combined with unmet societal issues and needs. (humanrights.gov.au, 2020)



Wesley Mission



3rd Space



Food Bank



Street Smart



4 Voices



Orange Sky



Sunny Street



Street Smart



Rosie's



Jack Reed Foundation



Ecumenical Coffee Brigade

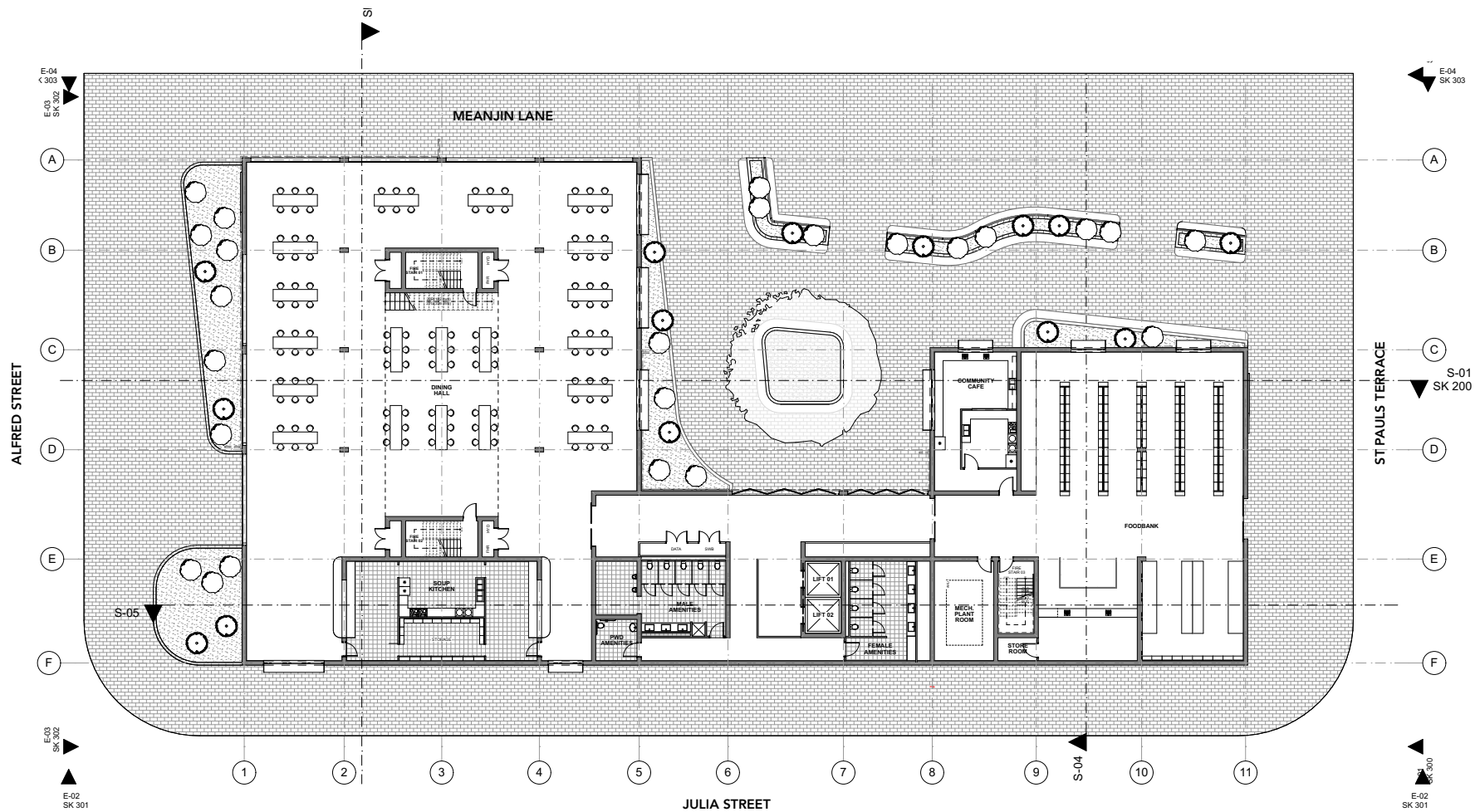


Dig In

# GROUND FLOOR

## SITE PLAN + GROUND FLOOR (NTS)

The ground floor and site of the meanjin community centre looks to create a pedestrian corridor which engages transient users of the space. The laneway culture of the proposed 'meanjin lane' is draws users past a community cafe and courtyard space.



# MEANJIN LANE

## SITE FACILITIES

Meanjin lane creates vital opportunities for the greater public to incidentally engage with the Meanjin Community Centre. This engagement looks to become a catalyst for the recruitment of volunteers as well as service providers.





# SECOND SHOT CAFE

## SITE FACILITIES

Second Shot coffee are a local not-for-profit organisation who have developed a unique business model to be replicated within the Meanjin Community Centre. Second shot employ people who are at risk of experiencing homelessness to work in their cafe.





# OZHARVEST GROCER

## GROUND FLOOR FACILITIES

Ozharvest is an Australian not-for-profit organisation who provide groceries and household goods at reduced rates to people who are experiencing hardship.

Ozharvest are identified as a key partner for the meanjin community centre, through the development of their first inner-city outreach facility.



# COMMUNITY SOUP KITCHEN

## GROUND FLOOR FACILITIES

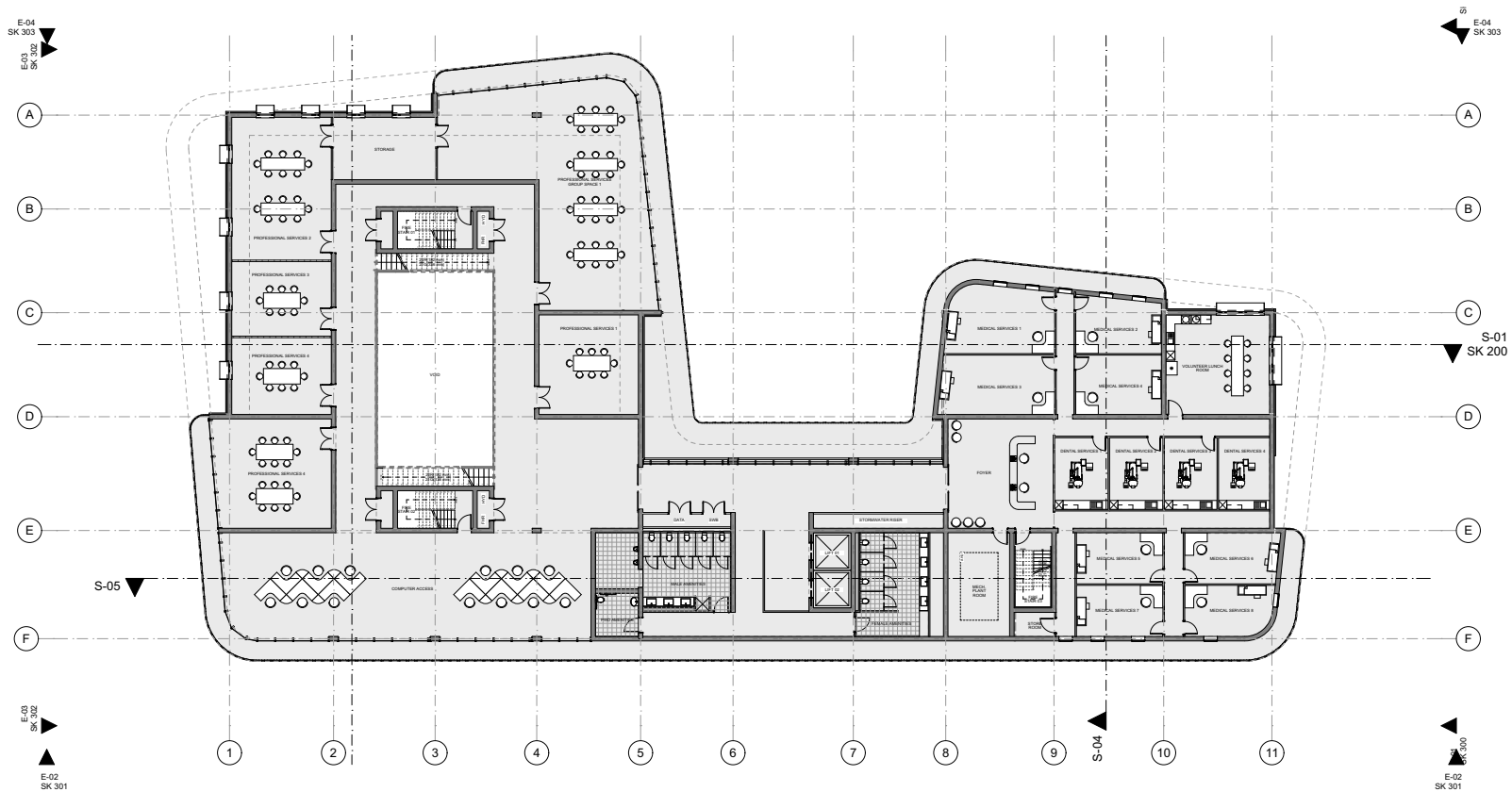
A community soup kitchen located on the ground floor of the precinct looks to provide an entry level of engagement to hesitant users. This simple outreach service provides a catalyst for conversation and further development through the Meanjin Community Centre program. This soup kitchen will be supported by various partners such as local school and religious outreach organisations.



# LEVEL 1

## FLOOR PLAN (NTS)

The first floor of the Meanjin Community Centre is home to professional and medical outreach services. Rooms are designed with loose format to be flexible to allow for a rotation of various volunteers and disciplines.



# PROFESSIONAL SERVICES

## LEVEL 1 FACILITIES

Professional services will be deployed through loose format rooms which can be re-arranged using modular furniture.

Services will include outreach such as legal aid, counseling, education and employment assistance.





# MEDICAL SERVICES

## LEVEL 1 FACILITIES

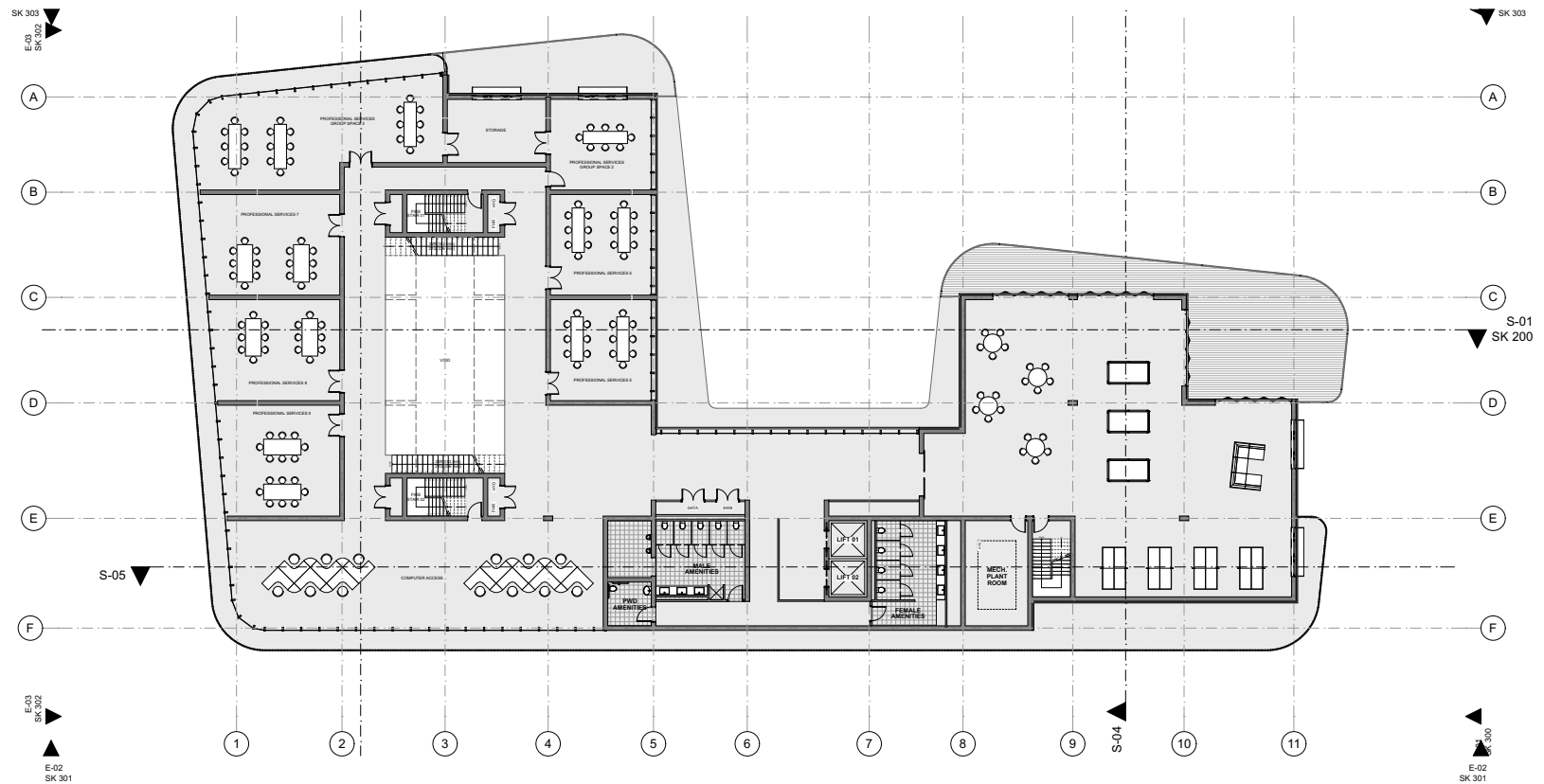
Medical services are available to persons experiencing hardship through collaboration with educational organisations such as University of Queensland faculty of dentistry, medicine, physiotherapy, and psychology. Students will receive their practical educations whilst providing an outreach service to vulnerable members of society.



# LEVEL 2

## FLOOR PLAN (NTS)

Level 2 of the Meanjin Community centre houses further facilities for the professional and personal development of persons who are at risk of or experiencing homelessness.



# COMMUNAL BREAK-OUT

## LEVEL 2 FACILITIES

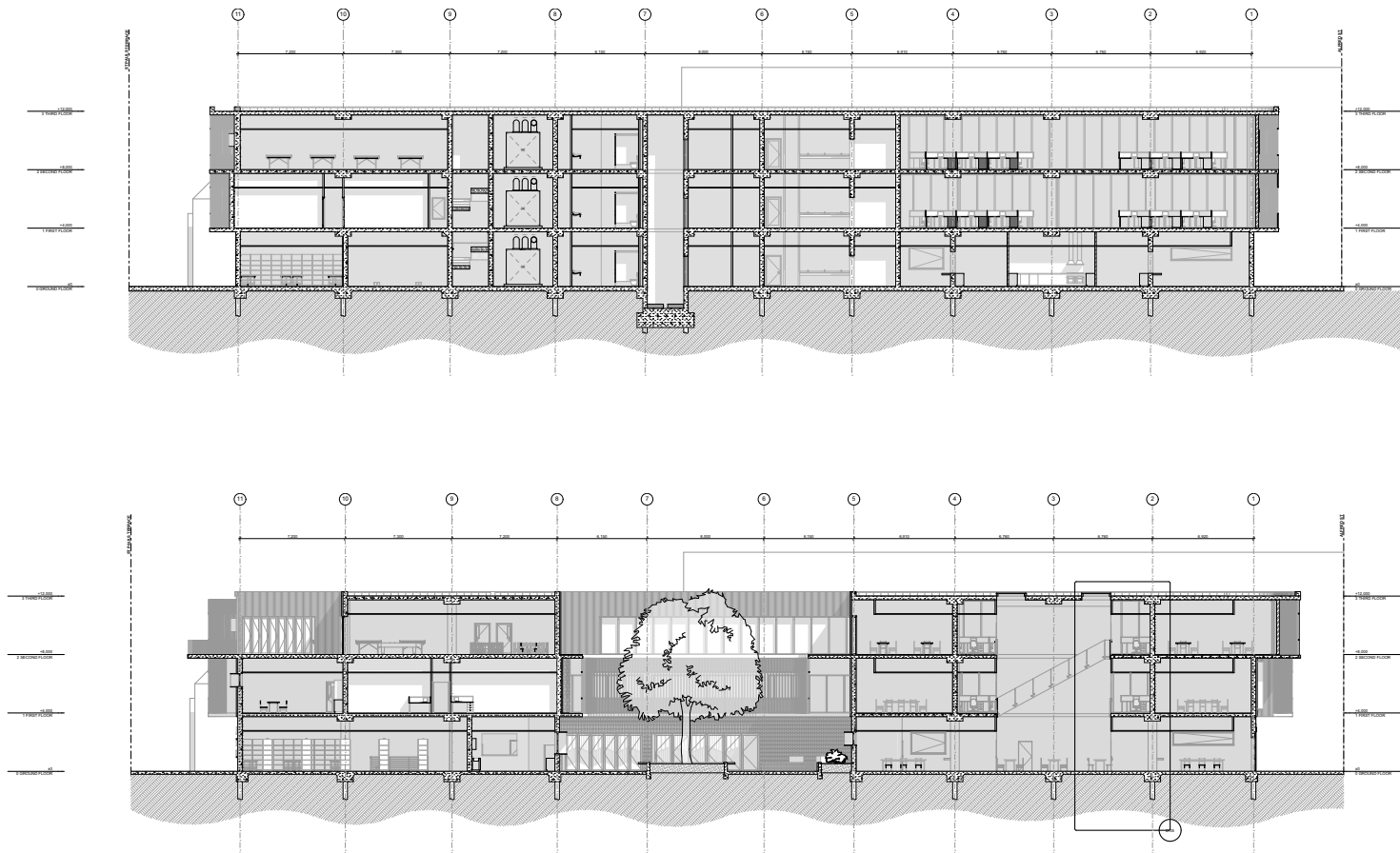
A key focus of the centre is to create a sense of belonging and community within occupants. As a result of this, a large communal breakout space is available to all members of the public to enjoy a positive connection and conversation with another person. This connection looks to break down stigmas surrounding homelessness, and also provide vital social connection to people who may feel disconnected.



# BUILDING FORM

## BUILDING SECTION (NTS)

Vertical movement plays an important role in the design concept. Similarly to Maslow's Hierarchy of needs, the Meanjin Community Centre is designed so that as a user journeys up through the building, more intricate needs are addressed.





# BUILDING FORM

## BUILDING RENDERS

The physical form of the centre is inspired by the architecture of Queensland and what makes a place feel homely. Large archways and traditional brickwork reference the architectural style of Brisbane throughout the late 1970's, whilst large amounts of screening and natural lighting draw inspiration from modern re-interpretations of housing.



# BUILDING FORM

## BUILDING RENDERS

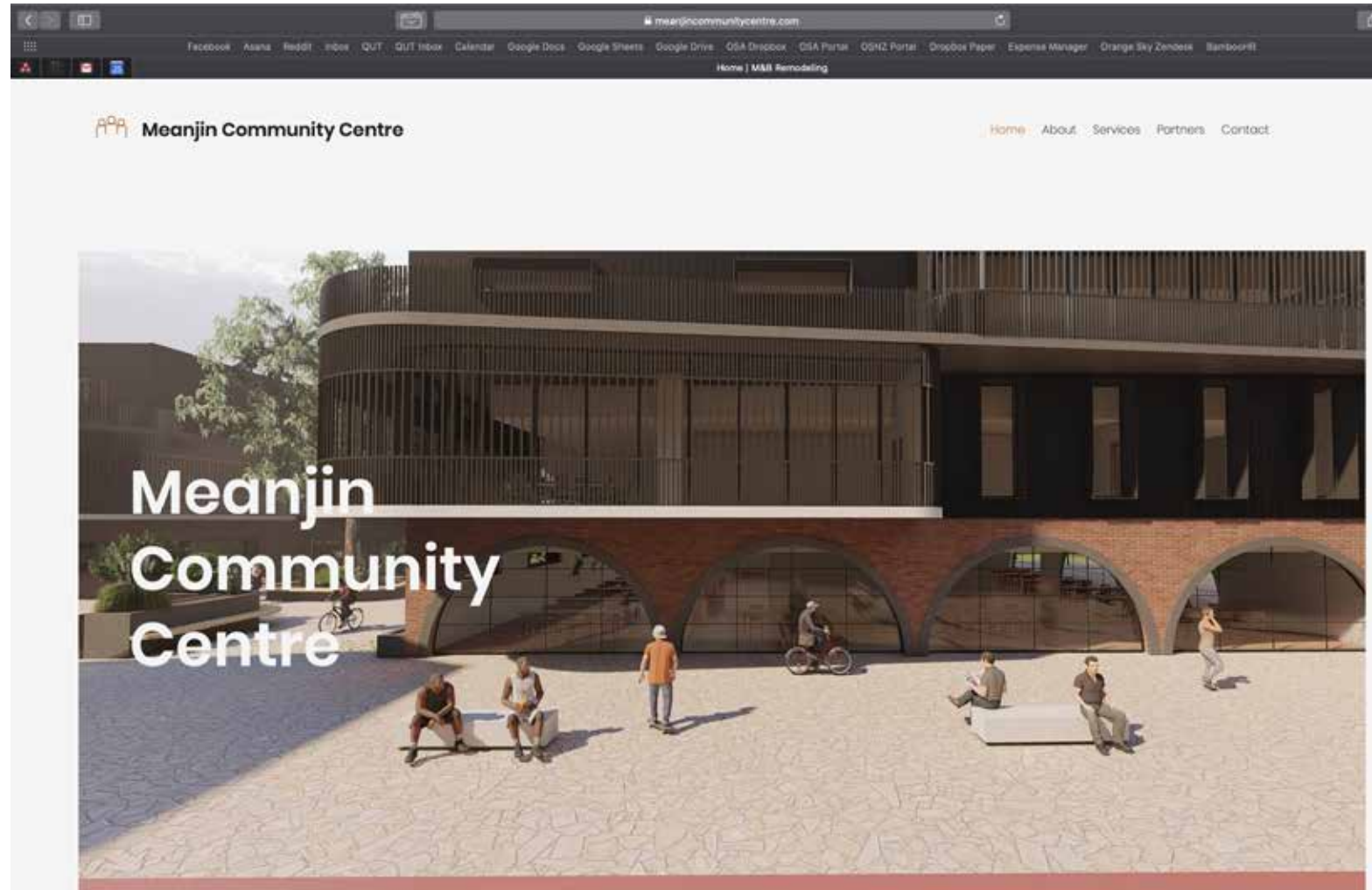
Large spaces for congregation are key to the centre's core mission of providing genuine connection. The centre courtyard acts as a starting point to the eventual disassembly of the stigmas surrounding homelessness.



# NARRATIVE TECHNOLOGY

WWW.MEANJINCOMMUNITYCENTRE.COM

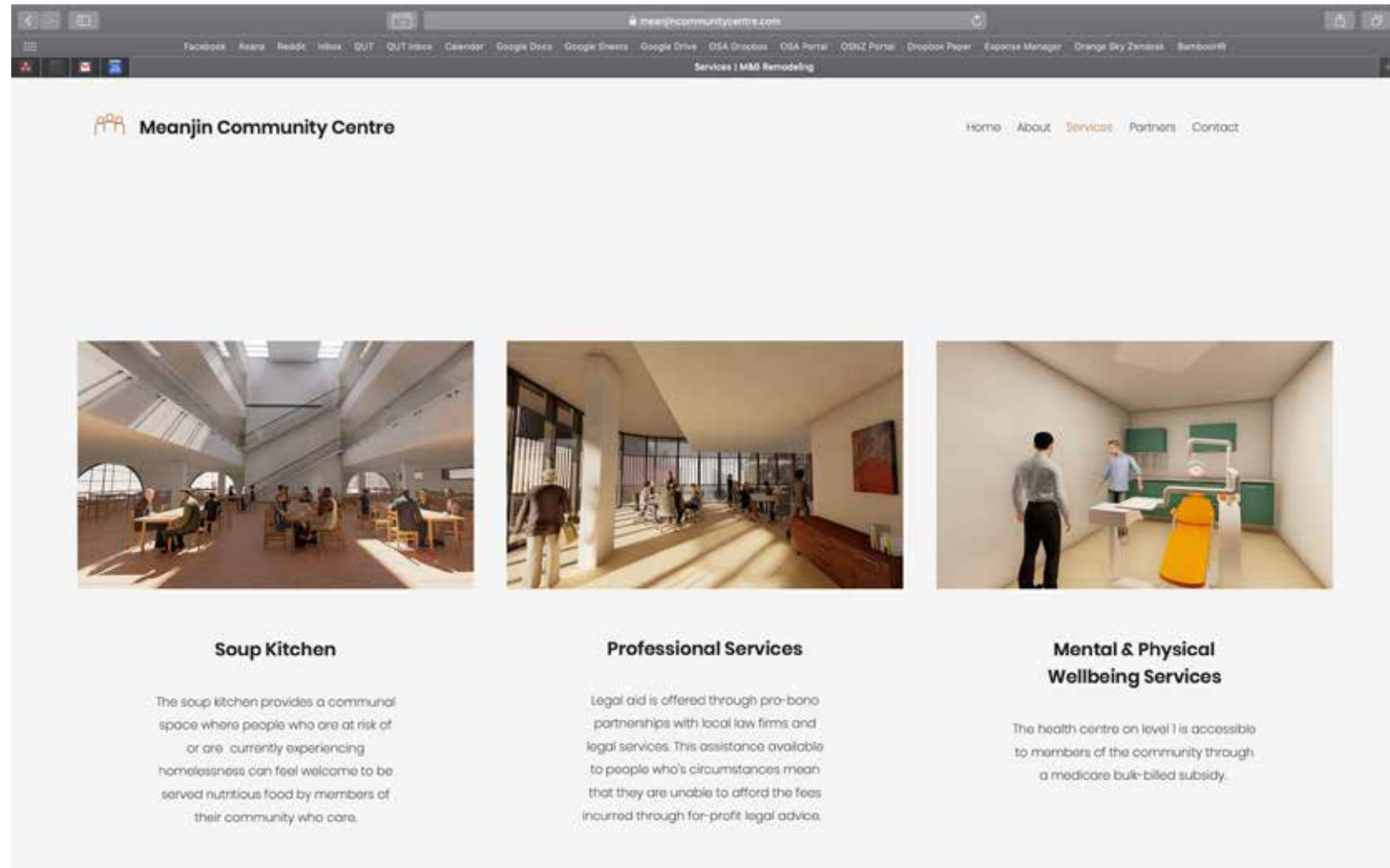
More information on the centre is available at the link above.





# NARRATIVE TECHNOLOGY

WWW.MEANJINCOMMUNITYCENTRE.COM



The image shows a browser window displaying the website for Meanjin Community Centre. The browser's address bar shows the URL 'meanjincommunitycentre.com'. The website's navigation menu includes 'Home', 'About', 'Services', 'Partners', and 'Contact'. The main content area features three columns, each with a photograph and a text description of a service provided by the center.

**Meanjin Community Centre**

Home About **Services** Partners Contact

**Soup Kitchen**

The soup kitchen provides a communal space where people who are at risk of or are currently experiencing homelessness can feel welcome to be served nutritious food by members of their community who care.

**Professional Services**

Legal aid is offered through pro-bono partnerships with local law firms and legal services. This assistance available to people who's circumstances mean that they are unable to afford the fees incurred through for-profit legal advice.

**Mental & Physical Wellbeing Services**

The health centre on level 1 is accessible to members of the community through a medicare bulk-billed subsidy.



# NARRATIVE TECHNOLOGY

WWW.MEANJINCOMMUNITYCENTRE.COM

