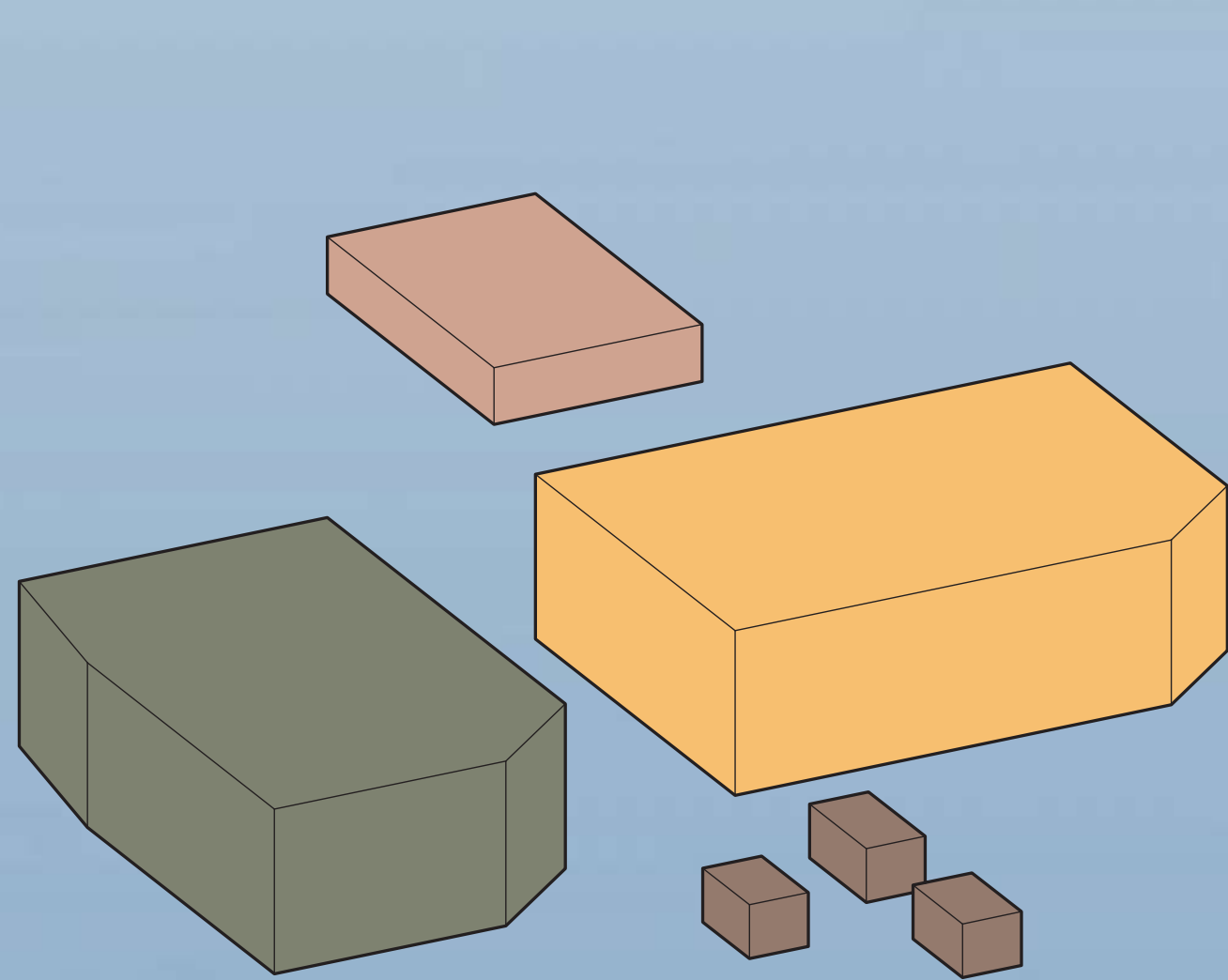
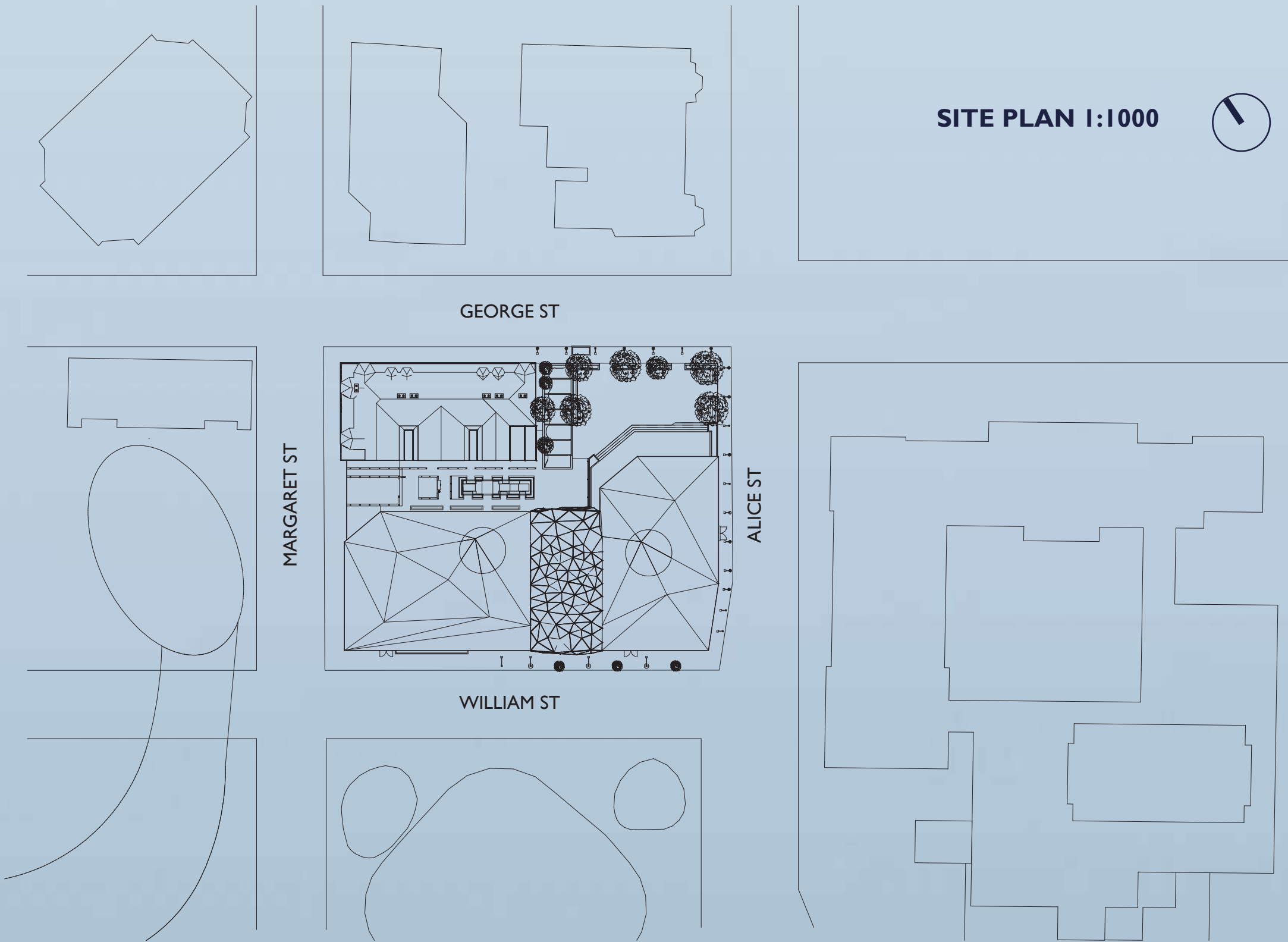


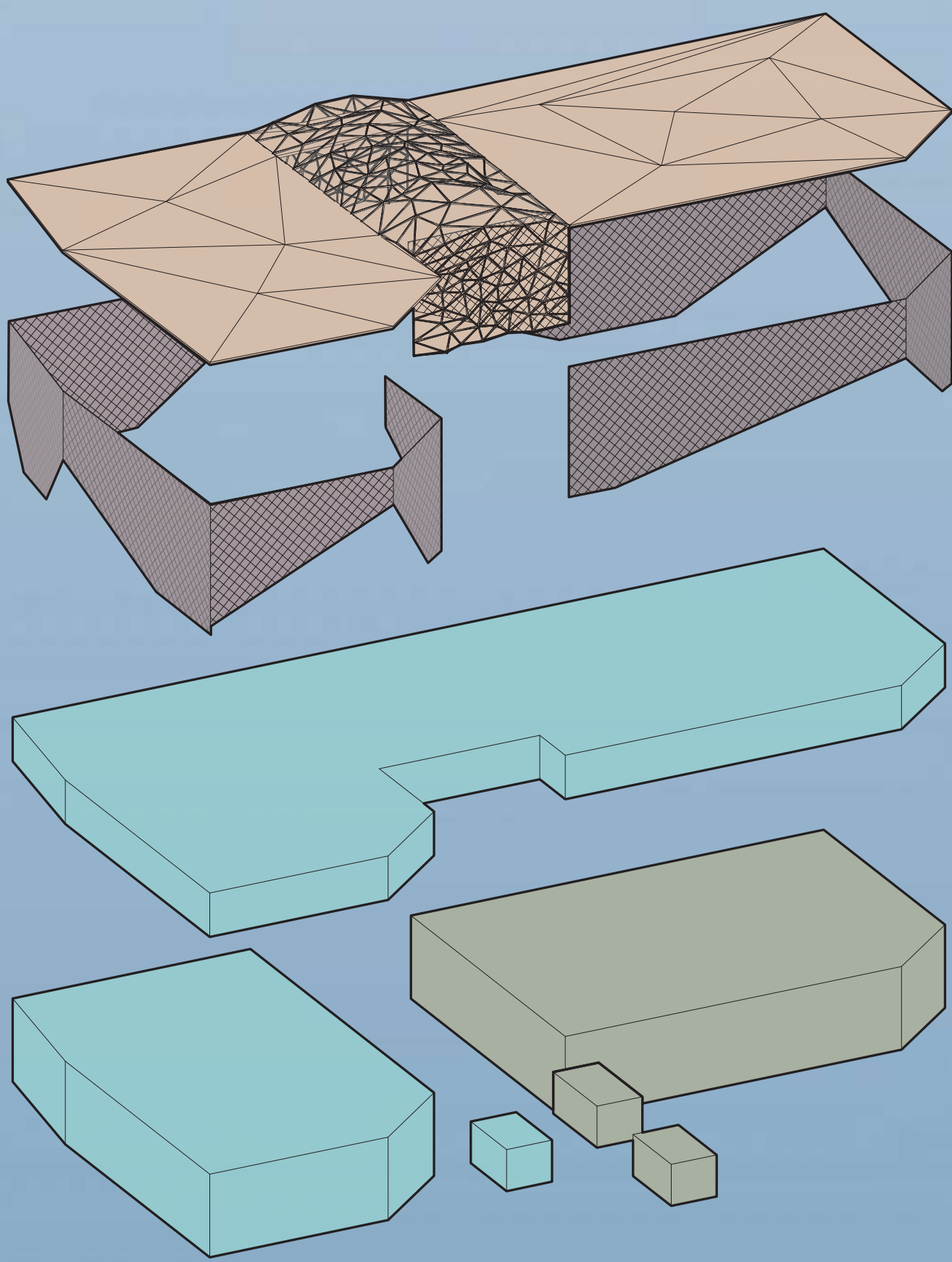
HALL OF DEMOCRACY

The new Hall of Democracy is a place provided for people in Queensland to visit, formulate, engage in activities, and discuss. This innovative building could bring people a new concept and vision for democracy. Powerful symbols of independence, dialogue, freedom, diversity and transparency are translated into the design which indicates and involves people in Queensland to view the reinvigorated democracy throughout this contemporary building. As the client Grievous Keppler mentioned, to create a Hall that is a Crystal Skull, a great use of transparency was integrated amongst the façade, exterior and interior of the building.

The design goal is to form a better perspective of democracy in Brisbane's community, inspiring visitors within the building to explore boundlessly. Effect of transparency fabric speaks the design language, as the concept of 'process of communication' and the outcome of 'consensus' was reflected through the choices of the structure, form and material of the entire building. The purpose of the design is to create a stimulatingly character of an active and lively democracy that is integrated within the previous vision and innovative sighting in Brisbane.



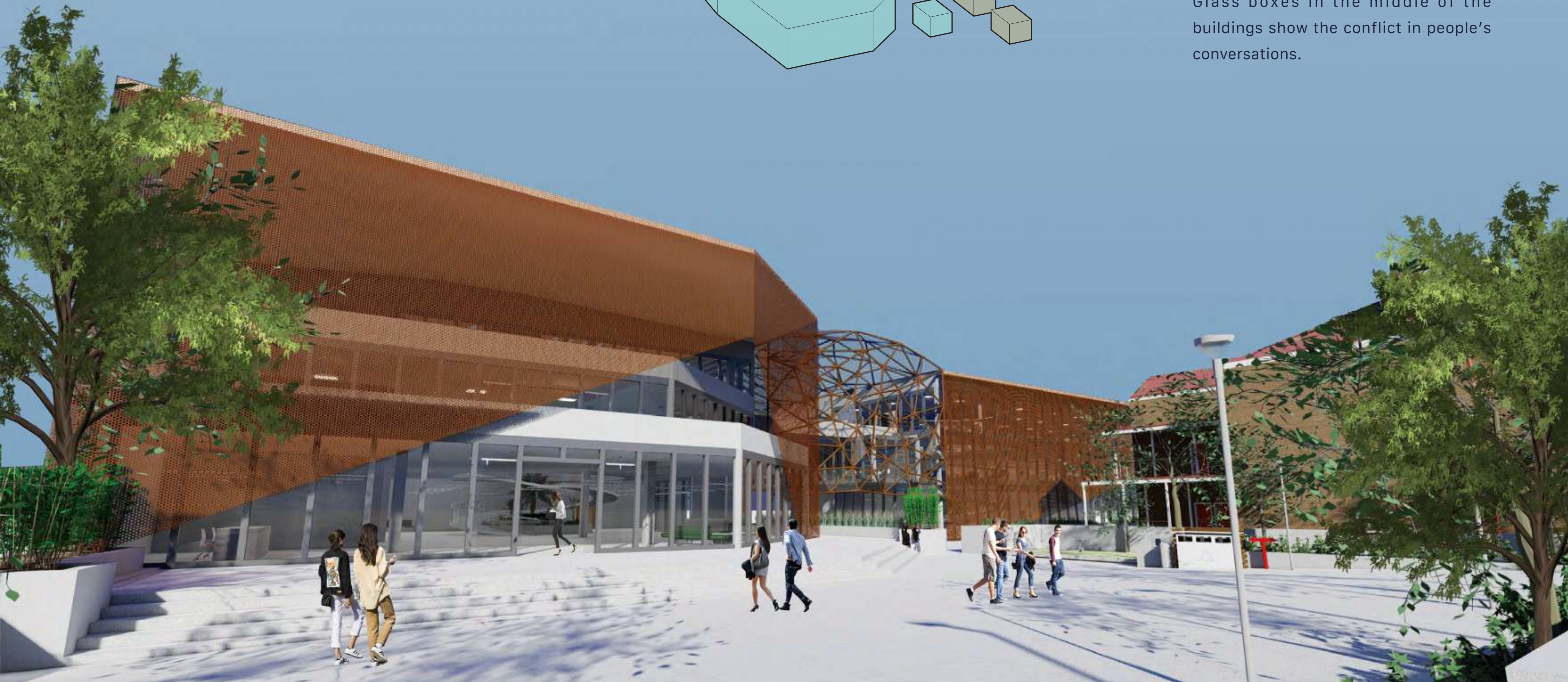
- DESIGN LANGUAGE**
- PUBLIC
 - GOVERNMENT
 - CONSENSUS
 - PROCESS OF COMMUNICATION



- LUXFER PRISM SYSTEM AND ROOF
- METAL MESH FACADE
- PUBLIC ZONING
- PRIVATE ZONING

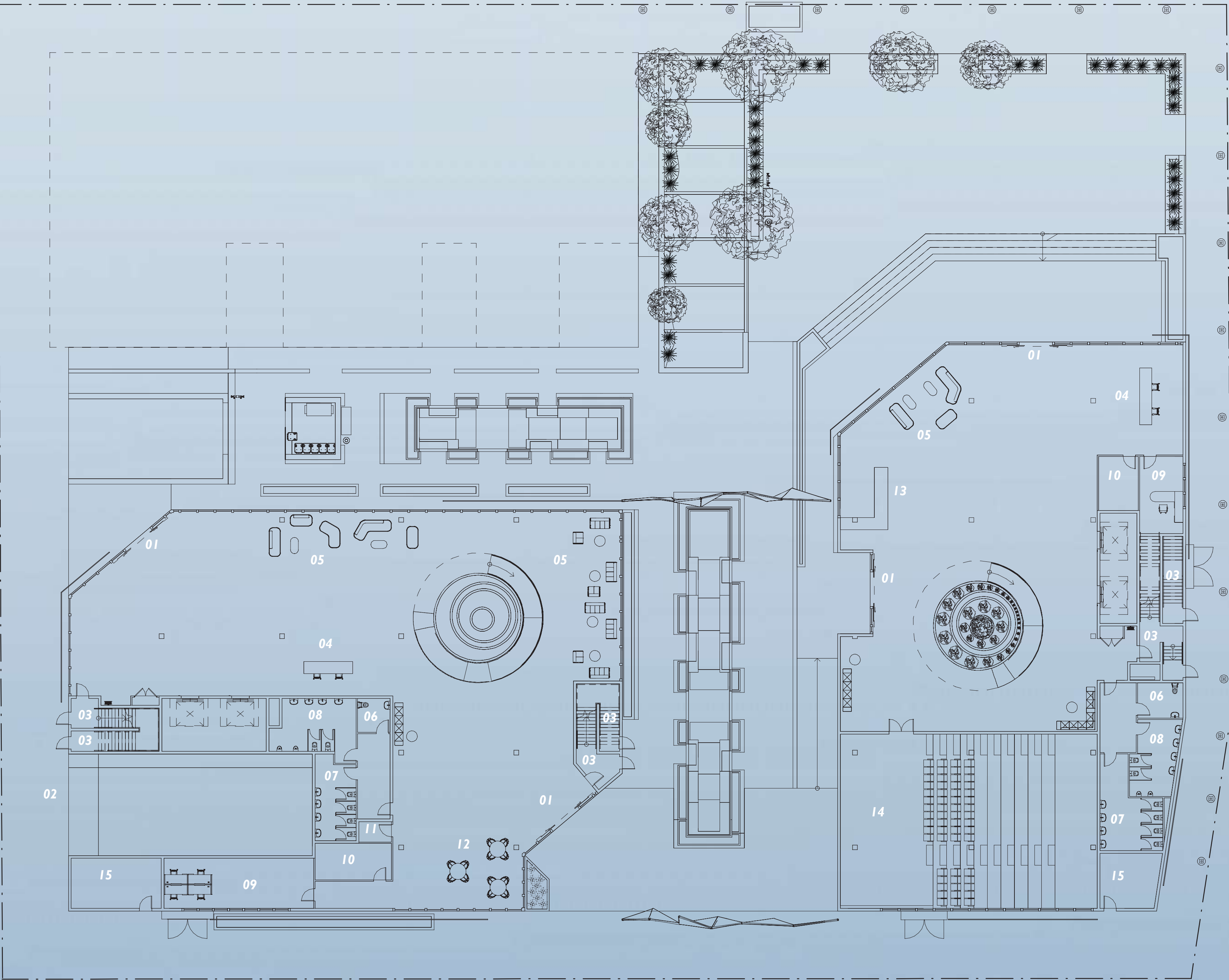
FACADE

The Luxfer Prism system in triangle structured façade embodies the symbol of independence, which indicates a sense of inflexibility that represents the stereotypical relationship between the public and government. The form of triangle shows the dissimilarity in people's opinions that builds hardness within their conversations just as it is on the exterior of the building. Metal mesh is the chosen hero material for the representation of transparency, enabling a sense of semi-privacy. Glass boxes in the middle of the buildings show the conflict in people's conversations.



GROUND FLOOR 1:200

- 01 ENTRANCE
- 02 CAR ENTRANCE
- 03 FIRE ESCAPE
- 04 RECEPTION
- 05 LOUNGE
- 06 PWD BATHROOM
- 07 FEMALE BATHROOM
- 08 MALE BATHROOM
- 09 OFFICE
- 10 SERCURITY ROOM
- 11 STORAGE
- 12 OPEN SERVICES AREA
- 13 CAFE
- 14 ASSEMBLY
- 15 PLANT ROOM

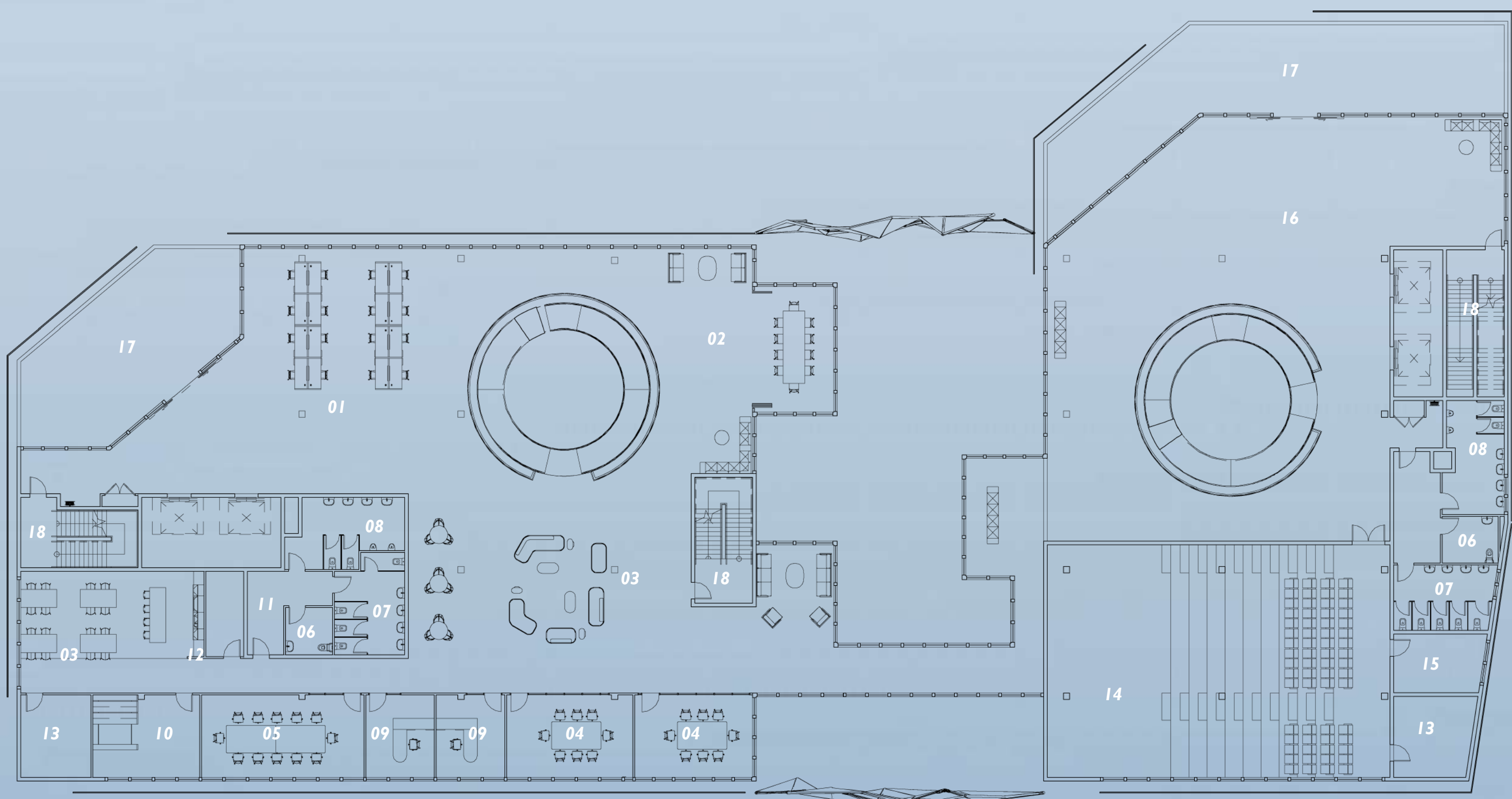




FIRST FLOOR 1:200



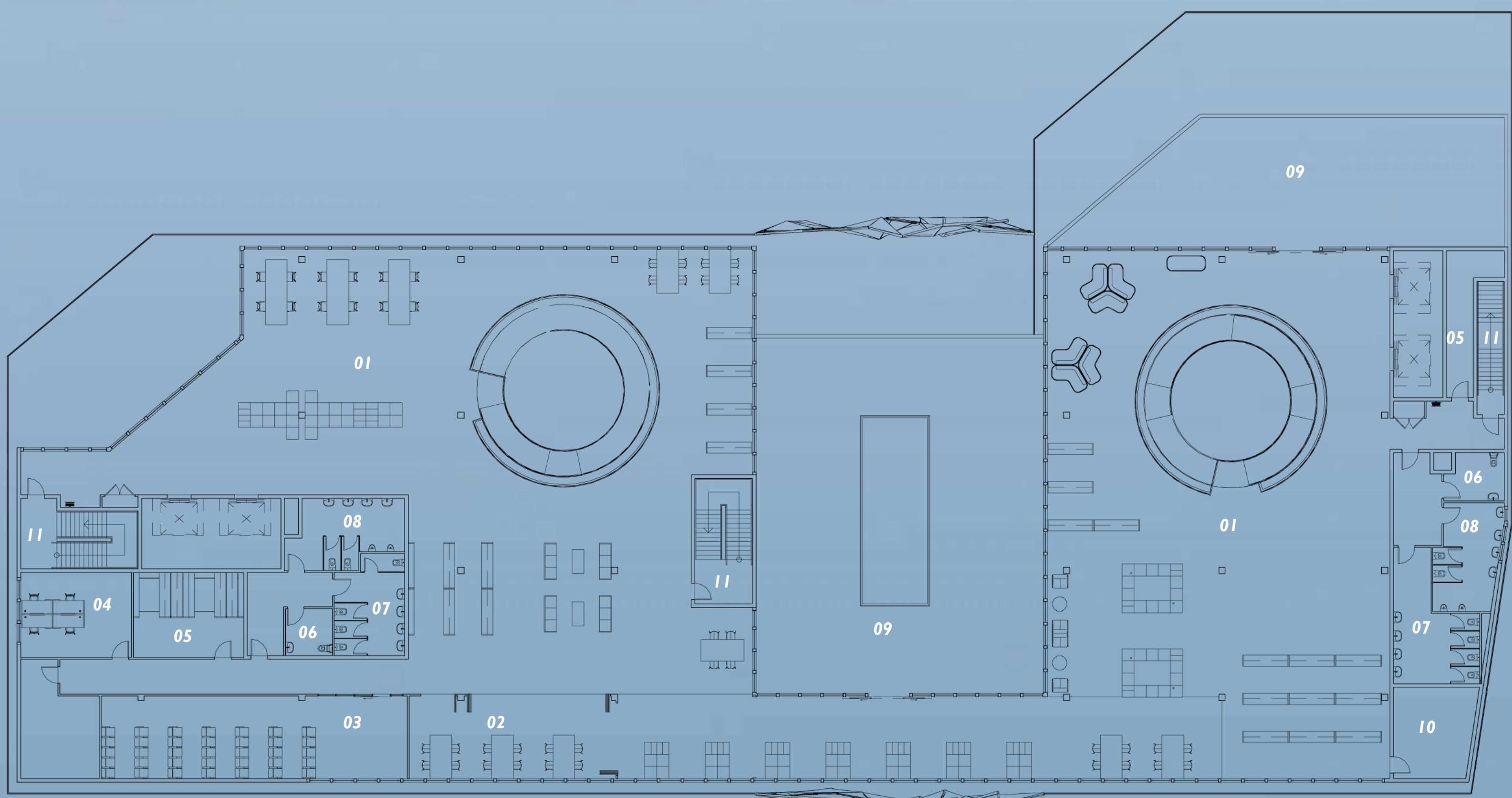
- 01 WORKSTATION
- 02 OPEN MEETING AREA
- 03 BREAKOUT AREA
- 04 MEETING ROOM
- 05 BOARD ROOM
- 06 PWD BATHROOM
- 07 FEMALE BATHROOM
- 08 MALE BATHROOM
- 09 OFFICE
- 10 UTILITY AREA AND COMPACTUS
- 11 STORAGE
- 12 KITCHENETTE
- 13 PLANT ROOM
- 14 ASSEMBLY
- 15 CONTROL ROOM
- 16 EXHIBITION
- 17 TERRACE GARDEN
- 18 FIRE ESCAPE

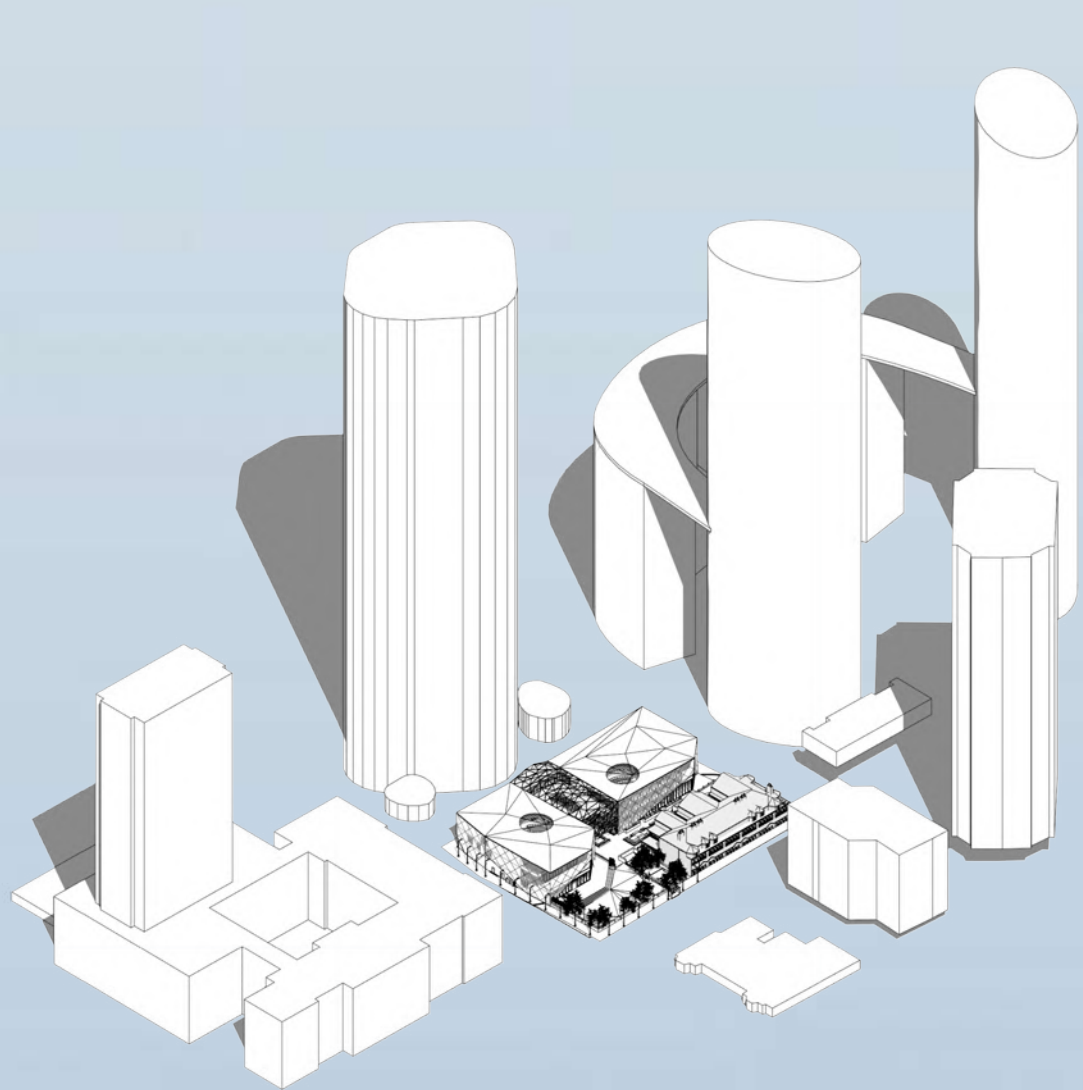


SECOND FLOOR 1:200

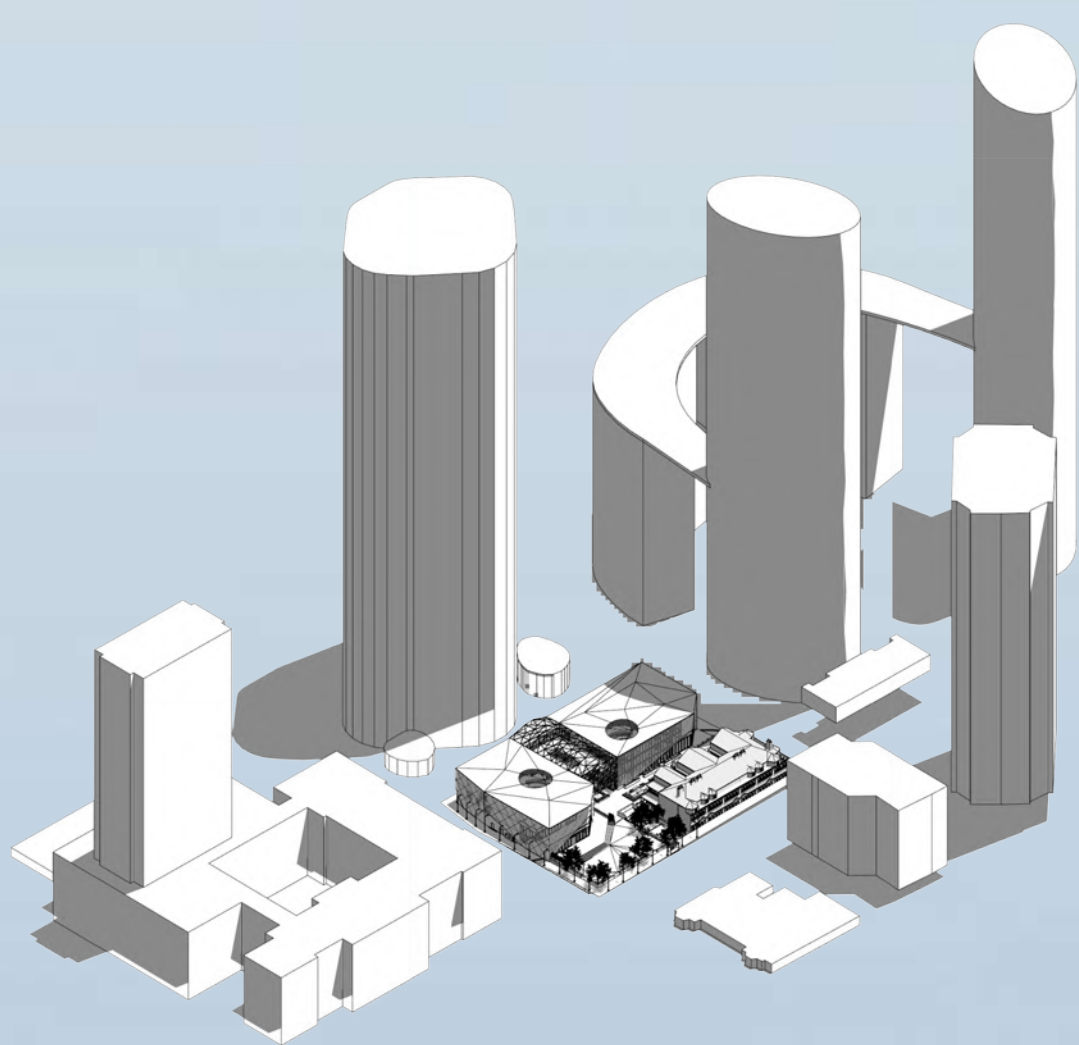


- 01 COMMUNITY LIBRARY
- 02 FLEXIBLE STUDY AREA
- 03 LECTURE ROOM
- 04 OFFICE
- 05 STORAGE
- 06 PWD BATHROOM
- 07 FEMALE BATHROOM
- 08 MALE BATHROOM
- 09 TERRACE GARDEN
- 10 PLANT ROOM
- 11 FIRE ESCAPE

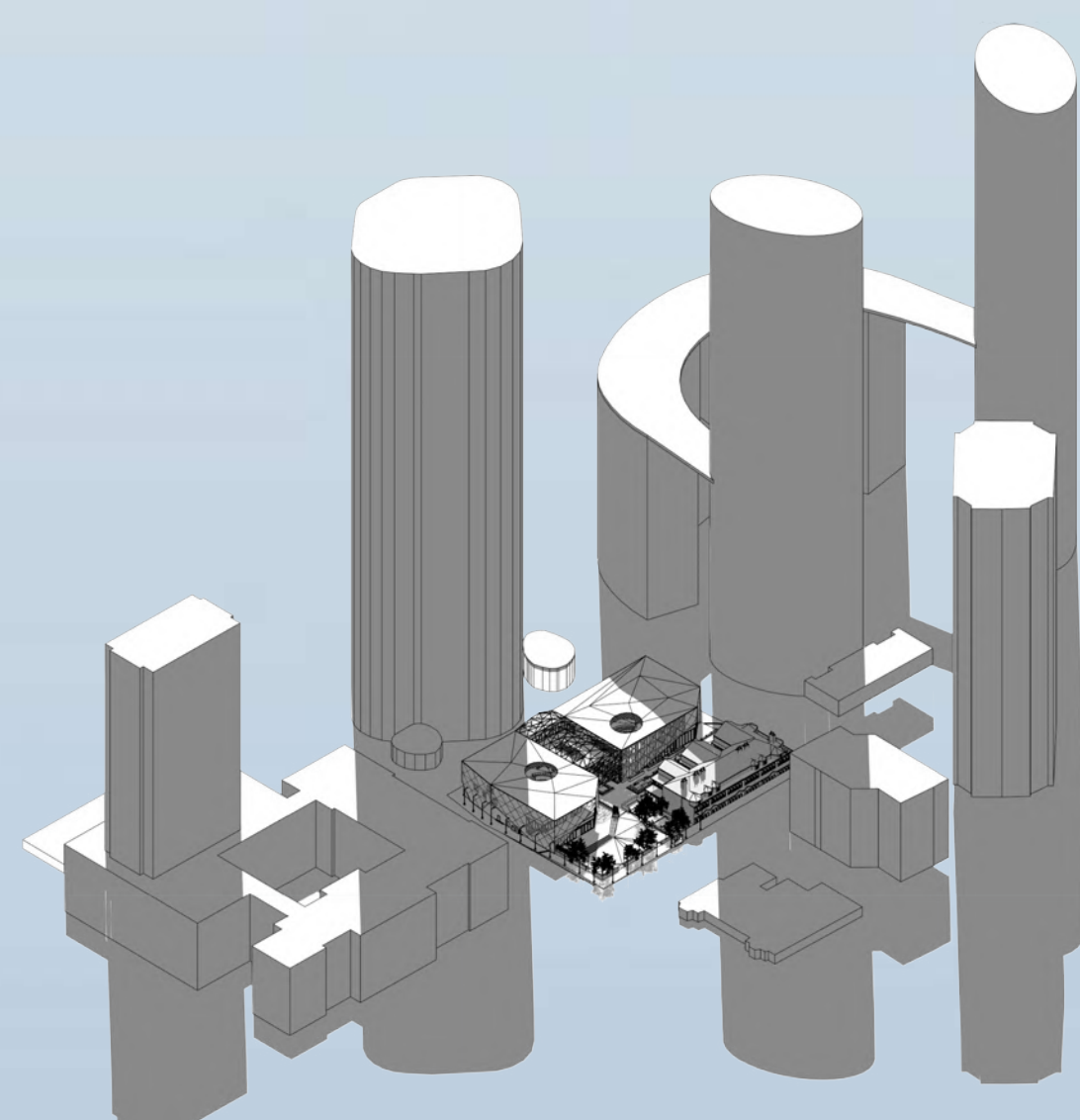




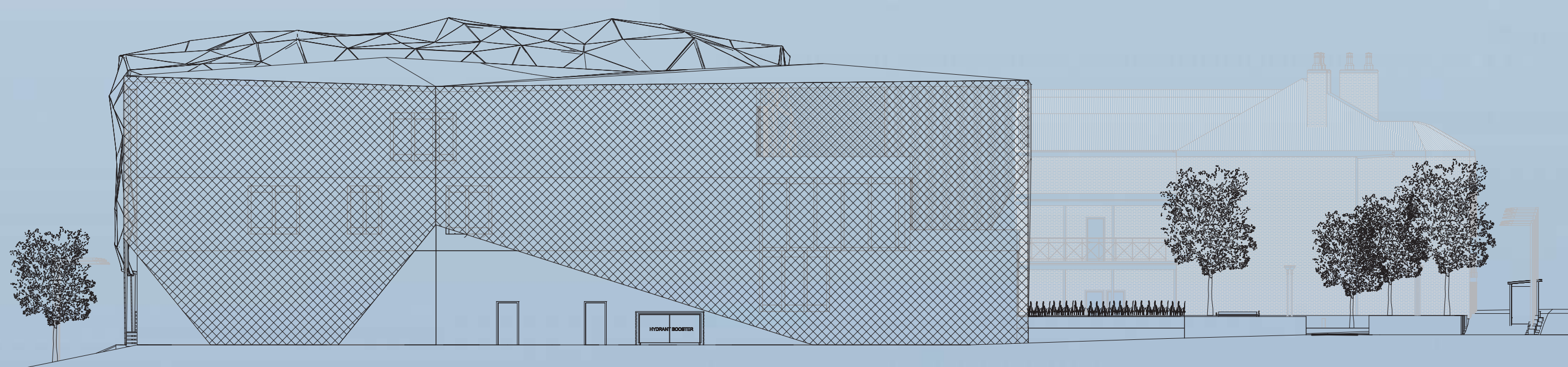
09 : 00



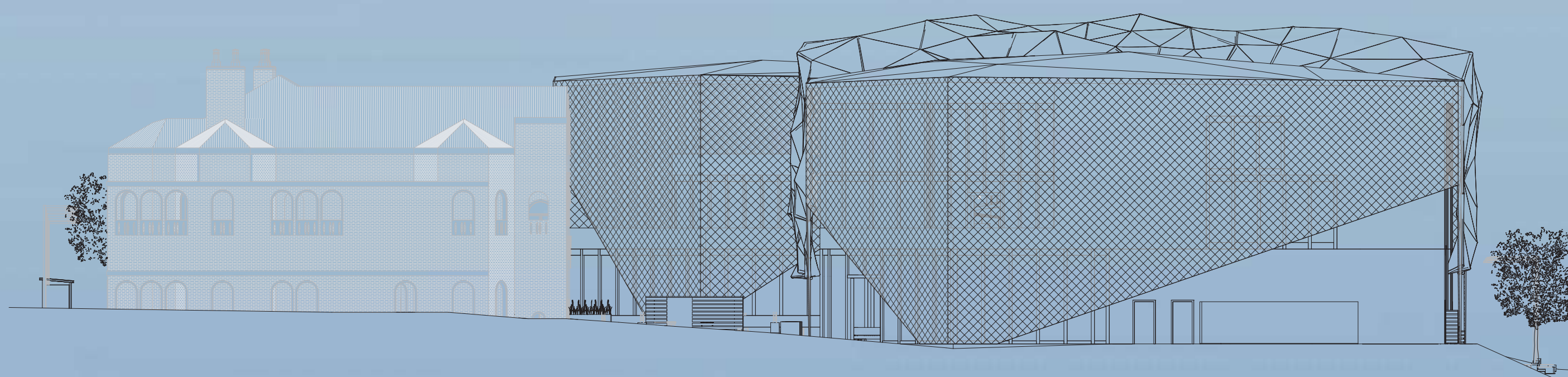
12 : 00



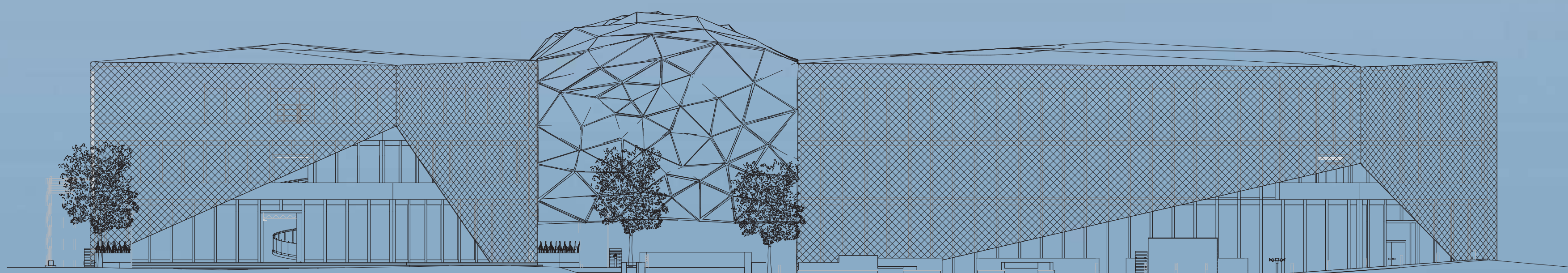
15 : 00



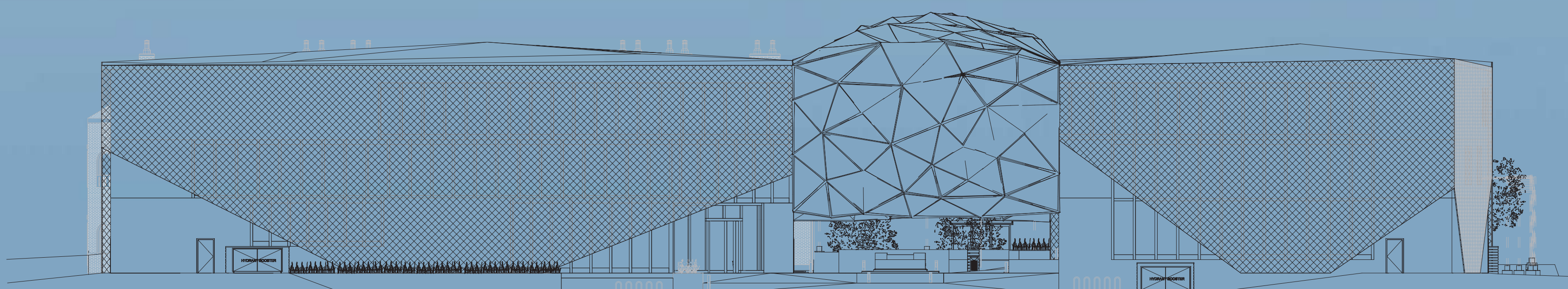
ELEVATION - EAST 1:200



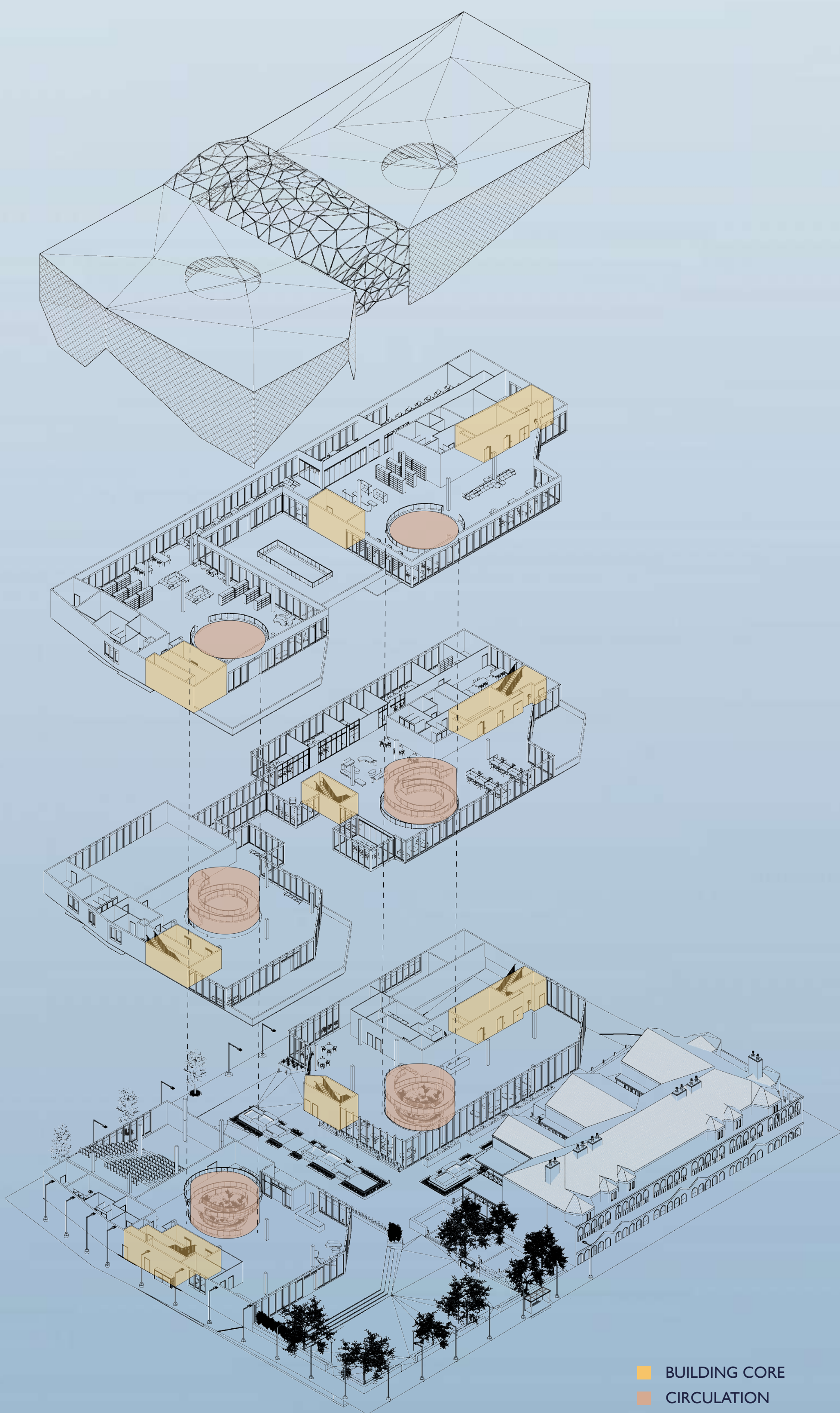
ELEVATION - WEST 1:200



ELEVATION - NORTH 1:200



ELEVATION - SOUTH 1:200



PASSIVE DESIGN

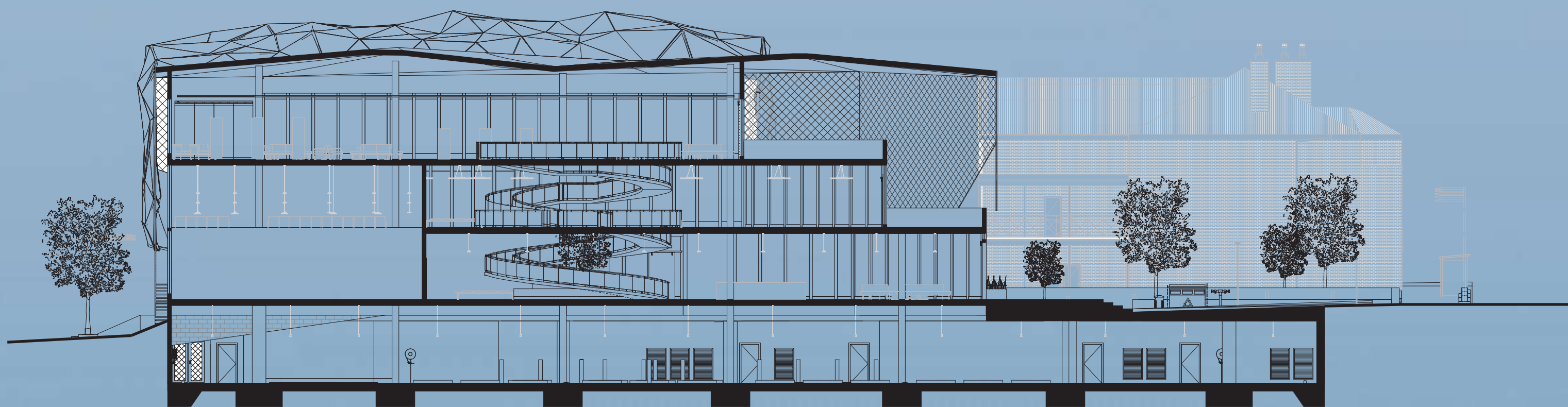
Hot air at each level rises through the atrium and exits from the metal mesh and curtain wall. The glazed louvres on the roof panel remain operable. This design feature promotes sustainability as it eliminates the need for an externally powered cooling system.

CIRCULATION

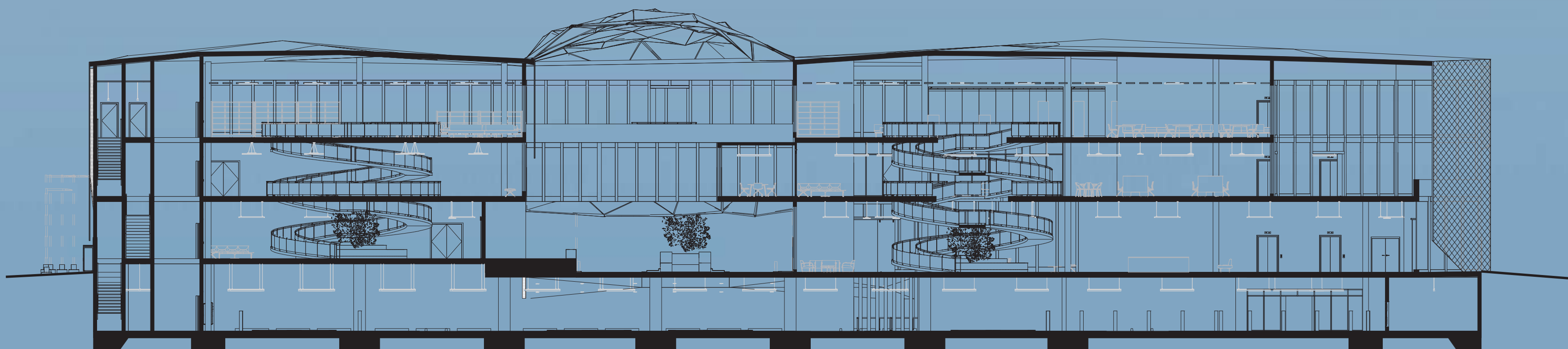
The process of communication then begins to transform when people start to negotiate and agree on similar perspectives, the conversation becomes fixable. Thus, the symbol of dialogue and freedom was delivered through the organic structured ramp that connects throughout the hall within the interior, which are representatives of the transformation of people's dialogues from hard to soft - a 'process of communication'. The ramp of the Hall shows a sense of flexibility to clear the conflict of democracy across the form of organic.

ROOFTOP COMMUNITY GARDEN

The rooftop garden on level 2 of the building allows visitors to gather and share the space together. The transparency dome above the garden represents the design goal of 'consensus'. Through the use of transparency, the design of the Hall of Democracy directs the visitors through a journey from the exterior of individuals to an interior of a connected community.

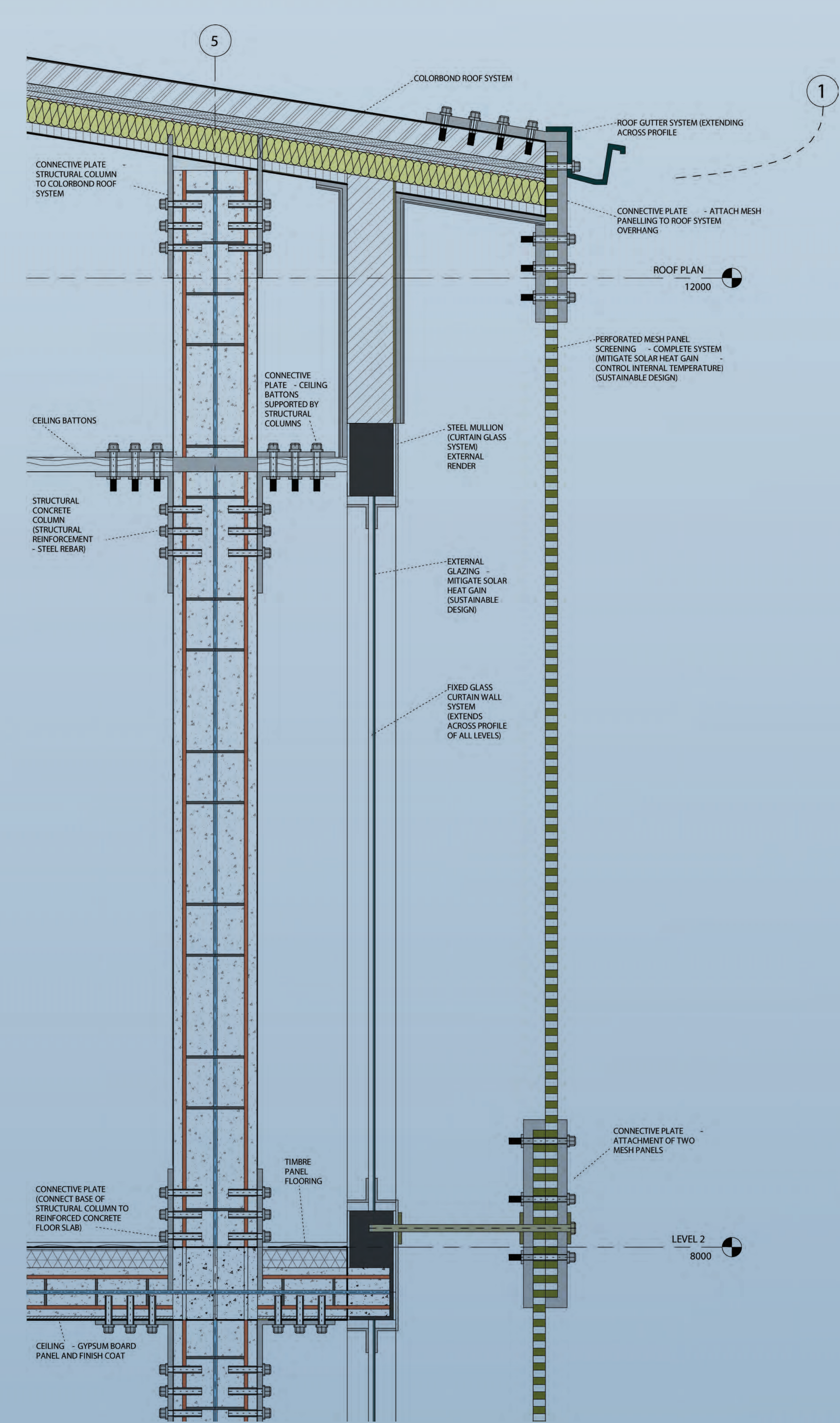
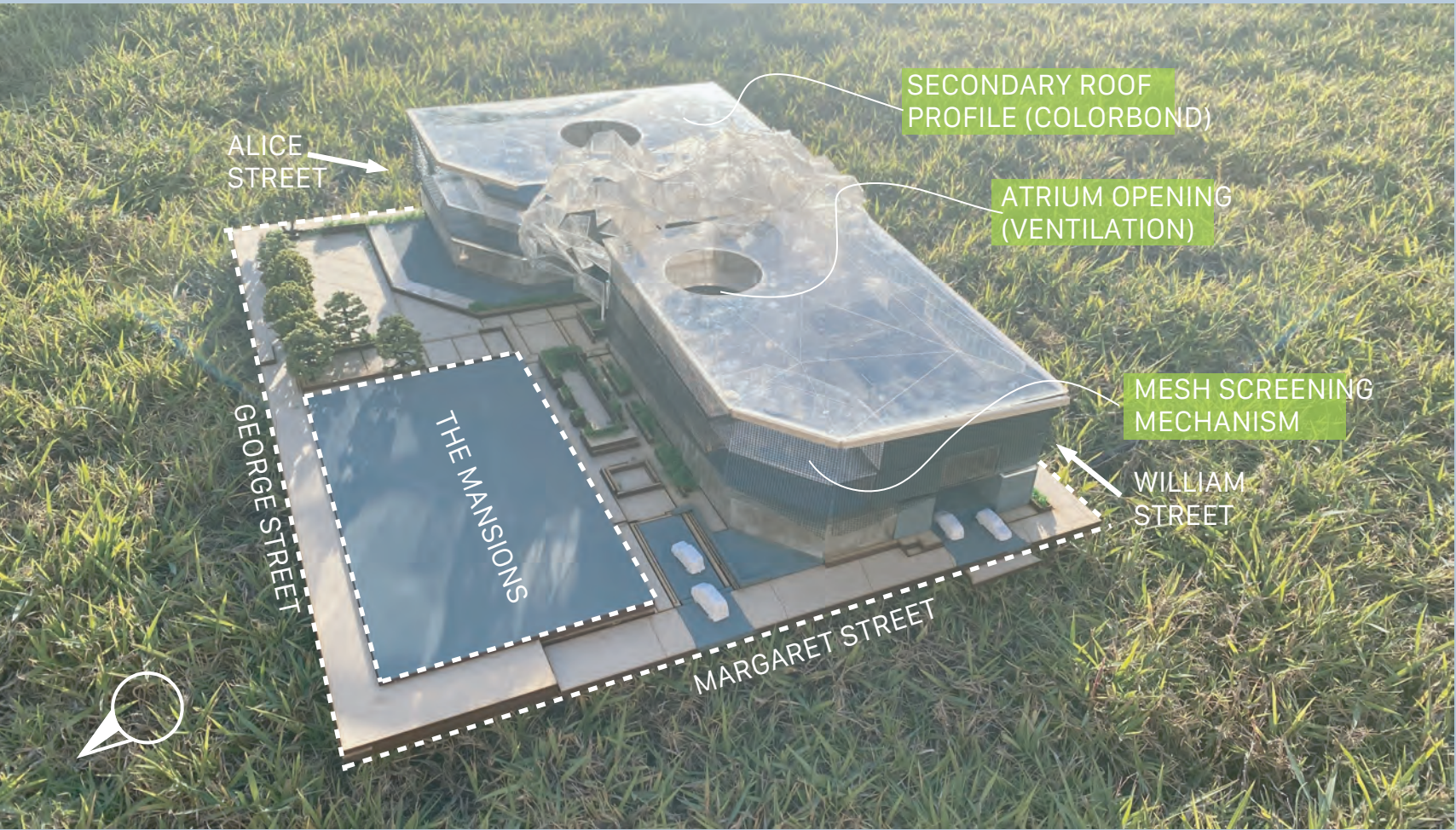


CROSS SECTION 1:200



LONGITUDINAL SECTION 1:200

ARCHITECTURAL MODEL (PHYSICAL)
SCALE - 1:150



TECHNICAL DOCUMENTATION - MESH SYSTEM
SCALE - 1:10

